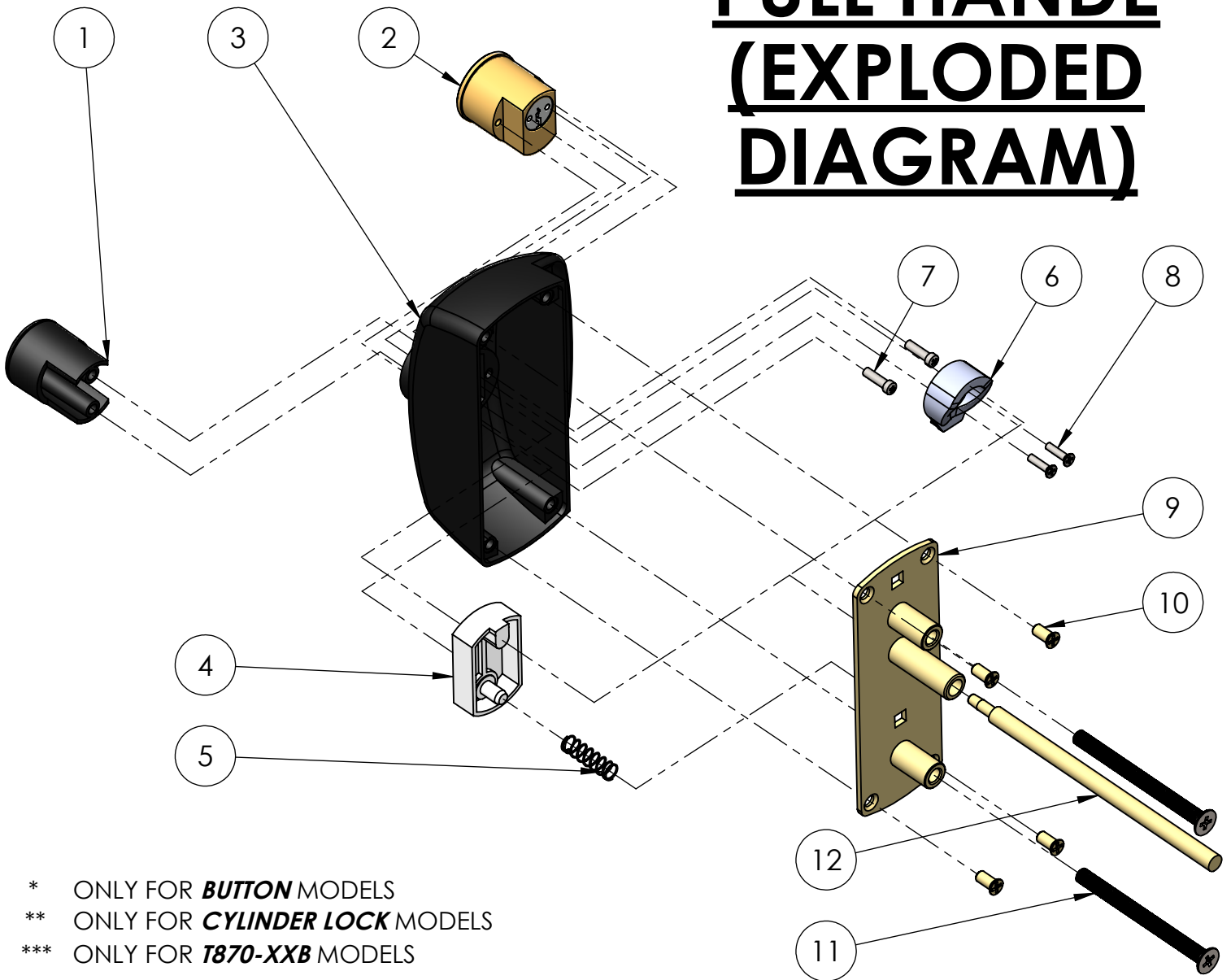


EXP-17-T870

T870 PULL HANDLE (EXPLODED DIAGRAM)



- * ONLY FOR **BUTTON** MODELS
- ** ONLY FOR **CYLINDER LOCK** MODELS
- *** ONLY FOR **T870-XXB** MODELS

12	THRUST PIN	SAE 12L14 STEEL ***/ NYLON 6.6 GF25	YELLOW ZINC PLATED / NATURAL (BLACK)	1
11	FIXING OUTSIDE TRIM TO DOOR SCREW	COMMERCIAL COUNTERSUNK HEAD W1/4" x 2-1/4"	BLUE ZINC PLATED	2
10	BASE FLANGE SCREW	COMMERCIAL COUNTERSUNK HEAD M4 x 8	YELLOW ZINC PLATED	4
9	BASE FLANGE	SAE 1010 METAL SHEET	YELLOW ZINC PLATED	1
8	FIXING CAM TO CYLINDER BODY **	COMMERCIAL COUNTERSUNK HEAD M2,5 x 10	BLUE ZINC PLATED	2
7	FIXING CYLINDER LOCK TO OUTSIDE TRIM BASE **	COMMERCIAL M3 x 10	BLUE ZINC PLATED	2
6	CYLINDER CAM **	NYLON 6.6	NATURAL (BLACK)	1
5	BUTTON SPRING *	ASTM 227 CII STEEL	NATURAL	1
4	BUTTON LOCK *	NYLON 6.6	NATURAL (BLACK OR GRAY)	1
3	OUTSIDE TRIM BASE	ZAMAK 5	ELECTROSTATIC PAINTING	1
2	CYLINDER LOCK YALE KEYWAY **	COMMERCIAL	NICKEL PLATED	1
1	BUTTON *	NYLON 6.6	NATURAL (BLACK OR GRAY)	1
No.	PART. NAME	MATERIAL	FINISH	QTY

BILL OF MATERIAL (BOM)