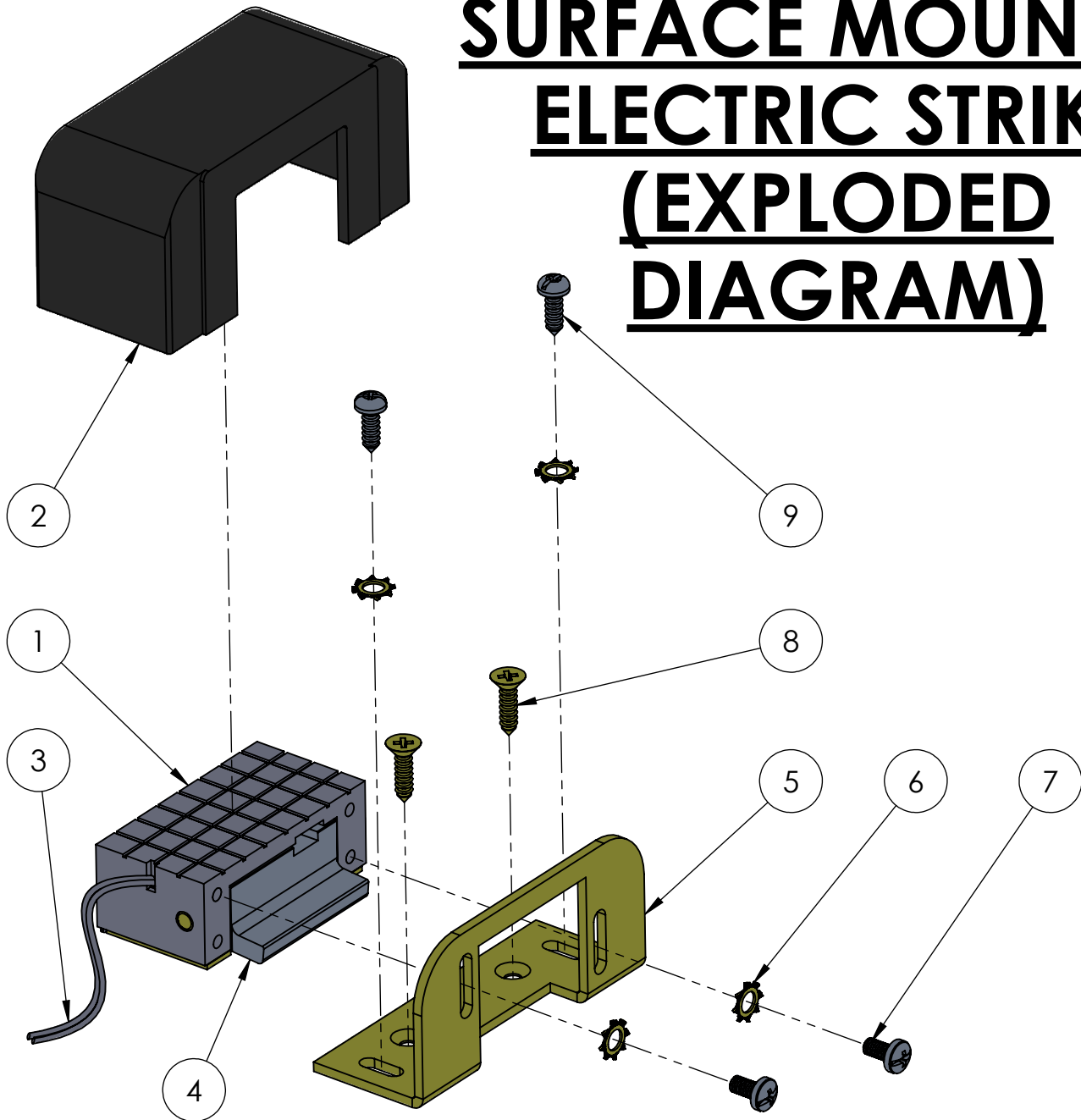


EXP-19-T730

T730 SURFACE MOUNTED ELECTRIC STRIKE (EXPLODED DIAGRAM)



9	ADJUST CENTER FRAME TO DOOR FRAME SCREW	COMMERCIAL ROUND HEAD PARKER #8 x 1/2"	BLUE ZINC PLATED	2
8	FIXING CENTER FRAME TO DOOR FRAME SCREW	COMMERCIAL COUNTERSUNK HEAD PARKER #7 x 5/8"	YELLOW ZINC PLATED	2
7	ADJUST AND FIXING ELECTRIC LOCK TO CENTER FRAME SCREW	COMMERCIAL ROUND HEAD M4 x 8	BLUE ZINC PLATED	2
6	STAR-SHAPED WASHER	COMMERCIAL I.D.=5.3mm / O.D.=10mm / Thk.=0.6mm	YELLOW ZINC PLATED	4
5	CENTER FRAME	SAE 1010 METAL SHEET	YELLOW ZINC PLATED	1
4	STRIKE PLATE	ZAMAK 5	BLUE ZINC PLATED	1
3	FEED CABLES	COMMERCIAL COOPER WIRE 1 x 0,16mm2 (AWG 25)	END TO SOLDER (TINNED)	2
2	CAP CASE	ZAMAK 5	ELECTROSTATIC PAINTING	1
1	ELECTRIC LOCK	ZAMAK 5 / SAE 1010 METAL SHEET	NATURAL / YELLOW ZINC PLATED	1
No.	PART. NAME	MATERIAL	FINISH	QTY

BILL OF MATERIAL (BOM)